



Explanations see practical informations on page 6 and 84!

FROST-FREE AND HEATED OUTDOOR STORAGE

DESCRIPTION:

As a result of the development of the „WSC Thermocontainers“ designed for industrial use it is possible to store thermally sensitive goods safely and independent of the outdoor temperature.

HEATING:

The WSC Thermocontainers can be laid out to utilise most of the different types of energy available in factories.

INSULATION:

All walls, roofs and floors are completely insulated with thermally insulating made from hardly inflammable or incombustible sandwich elements.

Approval-No.: Z-38.5-122



WSC-T-E.3-70



WSC-T-E.2-27

The practically proven construction of the WSC Thermocontainer provides the optimal solution for each application.

Whether for use with fork-lift trucks, for storing small or large containers - each requirement can be met.



All water protection compartment containers shown on pages 160 to 165 can be supplied in thermally insulated versions!



Model	WSC-T-E.1-30	WSC-T-E.2-30	WSC-T-E.3-30	WSC-T-E.1-60	WSC-T-E.2-60	WSC-T-E.3-60
Number of levels	1	2	3	1	2	3
External dimensions W x D x H* (mm)	3290 x 1440 x 2210	3290 x 1440 x 3180	3290 x 1440 x 4560	6360 x 1550 x 2280	6360 x 1550 x 3180	6400 x 1550 x 4580
Internal compartment dimensions W x D x H** (mm)	3010 x 1300 x 1730	3010 x 1300 x 1250	3010 x 1300 x 1250	3010 x 1300 x 1730	3010 x 1300 x 1250	3010 x 1300 x 1250
Sump capacity (l)	650	650	650	2 x 650	2 x 650	2 x 650
Capacity, 200 liter drums (examples)	10 directly on grid support or 8 on chemical pallets or 6 on euro-pallets	20 directly on grid support or 16 on chemical pallets or 12 on euro-pallets	30 directly on grid support or 24 on chemical pallets or 18 on euro-pallets	20 directly on grid support or 16 on chemical pallets or 12 on euro-pallets	40 directly on grid support or 32 on chemical pallets or 24 on euro-pallets	60 directly on grid support or 48 on chemical pallets or 36 on euro-pallets
Article no., with hinged doors	C22-5003-T	C22-5013-T	C22-5023-T	-	-	-
Article no., with sliding doors	-	-	-	C22-5103-T	C22-5113-T	C22-5123-T

* External dimensions plus base plates and rain discharge plate

** Compartment dimensions and stated capacities without considering electrical installations (ventilation, lighting, heating, cooling etc.)



FROST-FREE AND HEATED OUTDOOR STORAGE

GENERAL INFORMATION:

- ◆ Protected against unauthorized access by lockable sliding or hinged doors
- ◆ Sliding or hinged doors always 2-part on longer side as standard
- ◆ Including heating systems bases on hot water, electricity, steam or air circulation possible
- ◆ Can be equipped with air-conditioning
- ◆ All electrical installations in ex-proof version available
- ◆ With ground connection to prevent hazardous electrostatic charges

Approval-No.: Z-38.5-122



WSC-T-E.2-30,
Article no. C22-5013-T



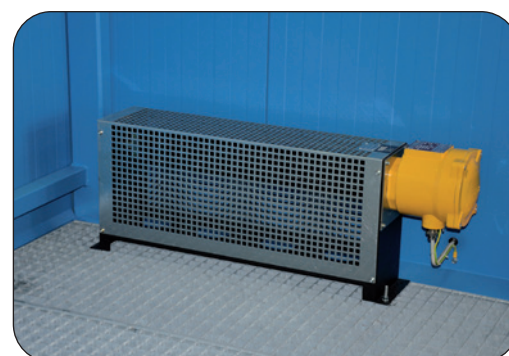
WSC-T-E.2-70



External switchbox



Convection heating, not ex-proof



Ex-proofed heating 1,5 kW